



"A sailing ship is no democracy; you don't caucus a crew as to where you'll go anymore than you inquire when they'd like to shorten sail. - Sterling Hayden

Blue Economy - Wave 61

(Series on "Blue Economy" By Capt. Gajanan Karanjikar)



Capt. Gajanan Karanjikar, Blue Economy Social Activist & Multi Modal Logistics Expert

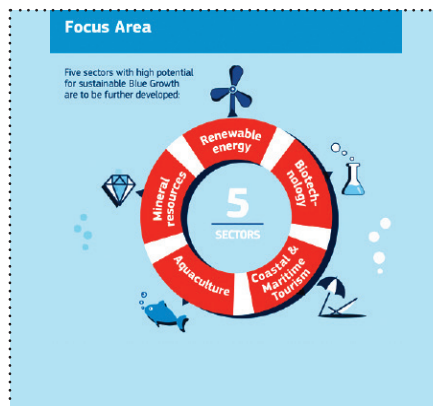
Blue Economy and Sagarmala (Cont...)

Coastal community development:

A—Community Development Fund (CDF) is being created to fund projects and activities related to coastal community development under Sagarmala. The CDF will fund projects related to value addition in fisheries, aquaculture, cold chain development, skill development, local tourism and recreational facilities, etc. which would be beneficial to the livelihoods of the coastal communities. The projects considered would be specific time-bound local interventions not covered under existing central/state government schemes

The Coastal Communities are key stakeholders in the Sagarmala Programme and their skill development and livelihood is an important objective of the program.

With skill development there will be close involvement of the coastal communities in Sagarmala and will make them contributors in the economic



development and will ensure inclusive growth of the coastal districts of the country.



Skill development for coastal communities:

In addition to the new jobs expected to be generated from port-led industrialisation, substantial manpower will be required for constructing infrastructure. Challenges

still exist in closing the skill demand-supply gap in India. The need is not only for fresh skilling but also for upskilling/re-skilling the existing labour force to make it compatible with the changing industry needs. Considering the above factors, a three pronged approach for skill development in coastal regions is proposed to be adopted under the Sagarmala Programme. The first area of focus will be to promote skill training programmes for job roles related to the ports and maritime sector. The second focus area will be to promote skill training and livelihood generation programmes (not related to the maritime sector) in the coastal districts to expand employment and livelihood generation opportunities for the coastal communities and to support development of human capital for the proposed industrial clusters. The third focus area will involve providing access to the training facilities of major ports for third-party skill training programmes in the coastal districts, which will reduce the need to develop

new training infrastructure in the coastal areas. The Ministry of Shipping, as part of the Sagarmala Programme, is already undertaking multiple activities/projects across the above-mentioned focus areas.

DeenDayal Upadhyay Grameen

Kaushalya Yojana (DDU GKY)

DDU-GKY is expected to bring in its skilling expertise to provide skilling for the coastal communities, thereby preparing them to take advantage of the job opportunities that are expected to come up in the maritime sector following port led development under Sagarmala. DDUGKY is the flagship programme of the ministry and under this program rural youth and women of coastal areas will be able to develop skills for Maritime, Shipping and Port Management.

Marine fishermen community development:

The marine fisheries subsector, impacting the nutrition availability in the country and accounting for approximately 0.5 per cent of India's total GDP7, is vital for the coastal districts. And the 3.9 mn fisherfolk (as of 2010), living in 3,288 marine fishing villages spread across the Indian coastline, form a critical component of the coastal communities. A concerted effort is required to help improve the status of the marine fishermen community on human development indices, ensuring uniform access to basic infrastructure such as housing, electricity, transport accessibility and healthcare and for promoting sustainable fishery management. As part of the Sagarmala Programme, the CDF and the Sagarmala Development Company (SDC) will provide funding grants for marine fishermen-related social welfare projects, projects for generating livelihood opportunities within the fisheries sector (e.g., new fish processing and value-added product development, etc.) or outside the fisheries sector (e.g., training in new skills and trades in small business development, agriculture, or handicrafts, etc.) and projects related to the promotion of sustainable marine fisheries management (e.g., sustainable fishery practices, promoting aquaculture, spreading fish quality literacy among fishermen, as well as developing facilities for fish landing and handling).

Solverminds offers algorithms to solve operational problems of shipping lines



As a result of the dramatic changes, container shipping lines need the ability to optimize and navigate the changes in their network, schedules, and operations by leveraging technology that integrates enterprise resource management solutions, consulting services, and data analytics.

NEW DELHI
Sagar Sandesh News Service

Solverminds Solutions and Technologies' Enterprise Resource Planning (ERP) and Optimizer solutions offer advanced optimization algorithms and machine learning techniques to prescribe the solutions for complex operational problems, aid quicker and informed decision making for liner shipping companies.

Technology maximizes contribution and optimization

"Using a combination of

optimization and AI/machine learning in vessel scheduling and pricing, technology maximizes contribution and optimization. AI is deployed to identify patterns in increased costs for ship operations, port and handling costs, while optimization solutions increase lift on board the vessel, achieve safe and optimal dangerous goods segregation, thereby improving reefer loading," says the release.

The problem

Liner shipping markets have undergone a period of extreme volatility during the

last 12 months as world trade patterns and operations have been disrupted by the global pandemic.

As a result of the dramatic changes, container shipping lines more than ever need the ability to optimize and navigate the changes in their network, schedules, and operations by leveraging cutting-edge technology that integrates enterprise resource management solutions, consulting services, and data analytics.

Turn to page -6 >>